

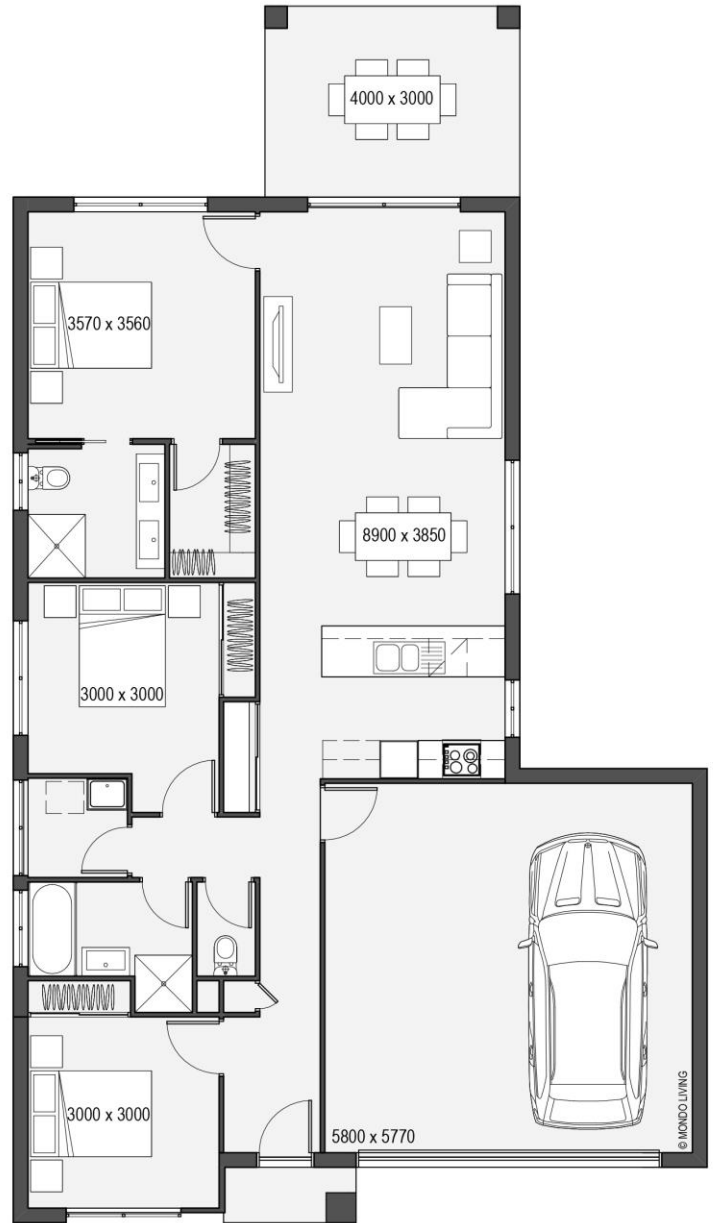
Your Haven of Modern Comfort.

Step into contemporary living with Selwyn 156. Boasting four bedrooms and two baths, this residence offers spaciousness and comfort for your family.

The heart of the home is its open living area, seamlessly blending the kitchen, dining, and living spaces. This versatile layout creates an inviting atmosphere for gatherings and everyday living.

Step outside to the charming 12m² outdoor area, where you can enjoy the fresh air and unwind amidst nature. Perfect for alfresco dining or simply relaxing with loved ones, this outdoor space adds a touch of tranquility to your home.

With a 2-car garage providing convenience and ample storage, Selwyn 156 is designed to enhance your lifestyle at every turn.



🛏️ 4 | 🛋️ 1 | 🚿 2 | 🚗 2

Total floor area 156 m²

Exterior Width 11m

Exterior Length 19.5m

External Living 12 m²

