

CLAIRVIEW 176



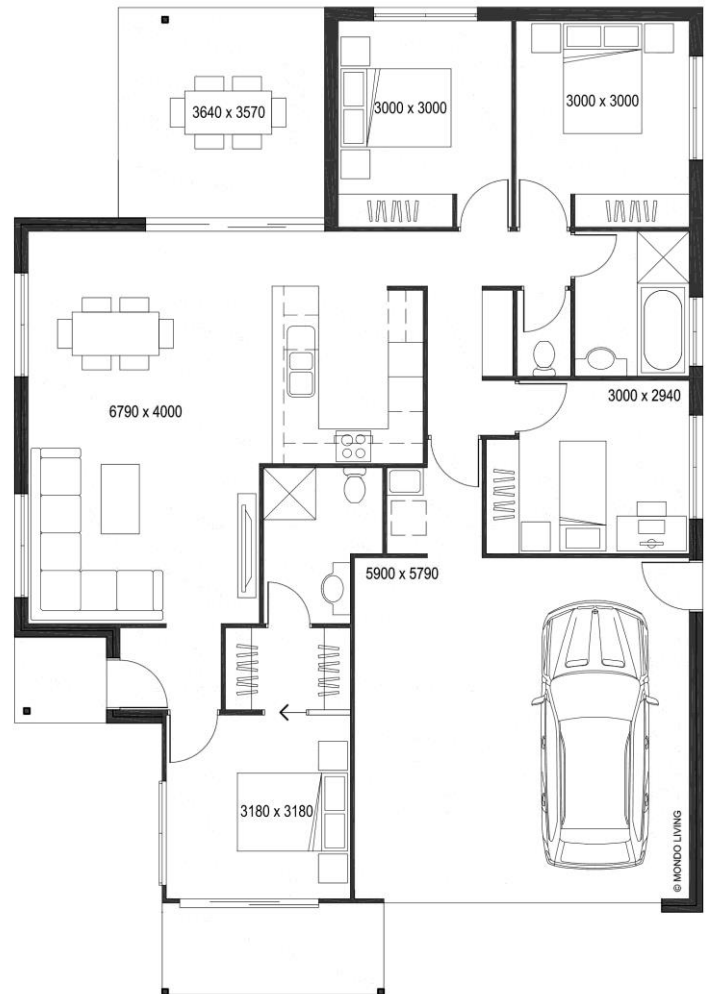
Your Modern Retreat with Side Entrance.

Welcome to Clairview 176, where modern design meets functionality. Featuring a convenient side entrance, this residence boasts four bedrooms and two baths, providing ample space for your family to thrive.

The heart of the home is its open living area, seamlessly integrating the kitchen, dining, and living spaces. Whether you're cooking a meal, entertaining guests, or relaxing with loved ones, this versatile layout caters to all your needs.

Step outside to the charming 13m² outdoor area, where you can enjoy the fresh air and sunshine with family and friends. Perfect for alfresco dining or simply unwinding after a long day, this outdoor space adds an extra dimension to your living experience.

With a 2-car garage providing convenience and ample storage, Clairview 176 is designed to enhance your lifestyle and provide you with the ultimate modern retreat.



🛏️ 4 | 🛋️ 1 | 🚿 2 | 🚗 2

Total floor area 176 m²

Exterior Width 12m

Exterior Length 17.5m

External Living 13 m²

