



Two-Story Retreat with Endless Possibilities.

Welcome to Newquay 388, where modern design meets versatile living. This two-story residence offers the perfect balance of comfort and functionality, with endless possibilities to tailor the space to your lifestyle.

With two outdoor areas, Newquay 388 invites you to enjoy the beauty of the outdoors from the comfort of your own home. Whether you're hosting gatherings or simply relaxing with family, each outdoor space offers a tranquil retreat.

Inside, you'll find four bedrooms and four baths, providing ample space for family and guests. The open space living area is ideal for entertaining, with seamless flow between the kitchen, dining, and living spaces.

Upstairs, a sanctuary awaits for the kids, complete with their own separate lounge. Whether they're playing games or unwinding with a book, this space offers a private retreat away from the hustle and bustle of daily life.

With a 2.5-car garage providing ample storage and convenience, Newquay 388 is the perfect canvas for creating your dream home.

🛏️ 4 | 🛋️ 2 | 🚿 4 |
💻 1 | 🍽️ 1 | 🚗 2.5

Total floor area 479 m²

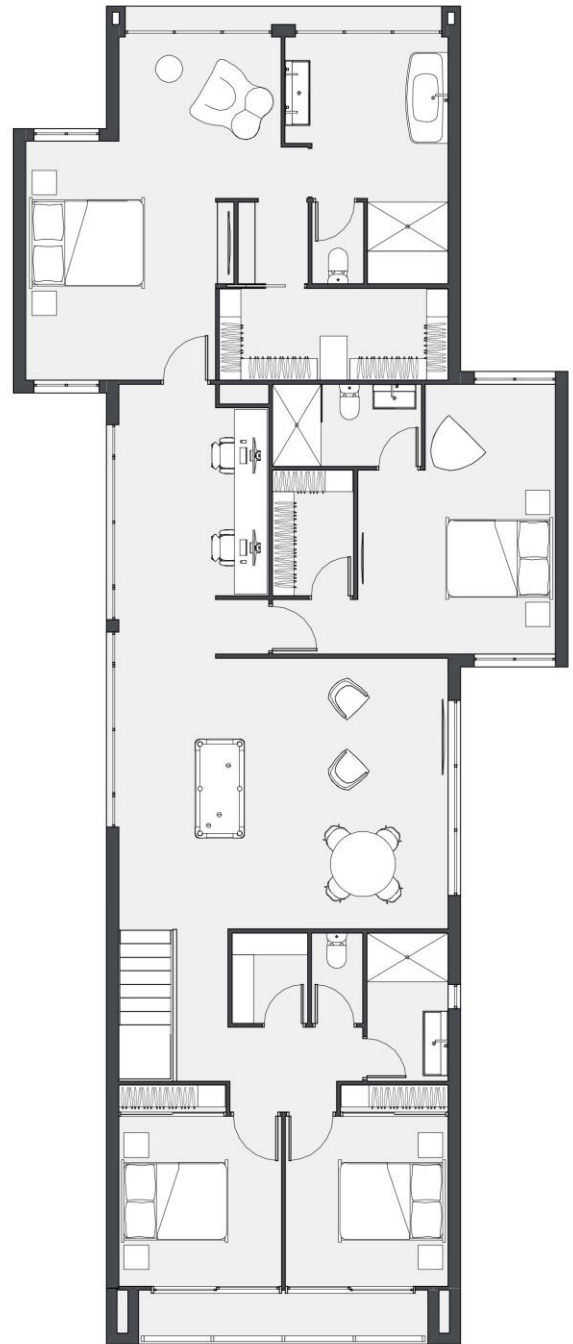
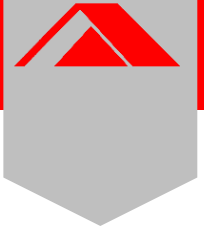
Exterior Width 12m

Exterior Length 25m

External Living 45 m²



NEWQUAY 388



4 | 2 | 4 | 1 | 1 | 2.5

Total floor area 388m²

Exterior Width 12m

Exterior Length 25m

External Living 45 m²