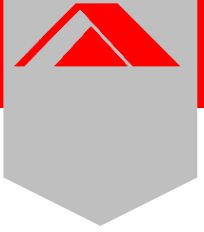
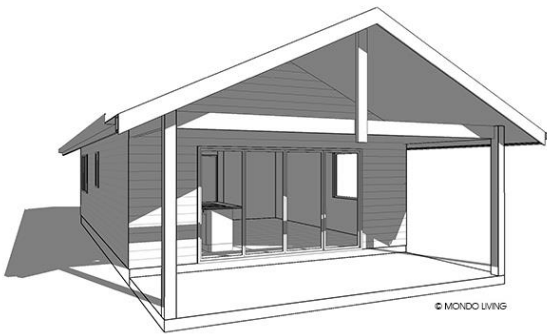


THE SYDNEY 75



Introducing The Sydney 75:

a spacious and thoughtfully designed second dwelling featuring 75m² of living space and a generous 15m² patio. This stylish home offers one bedroom and a large open-plan living area, enhanced by a gable roof that brings a touch of modern architecture. It's the perfect blend of comfort and contemporary design, ideal for those seeking a versatile and elegant living space.



© MONDO LIVING

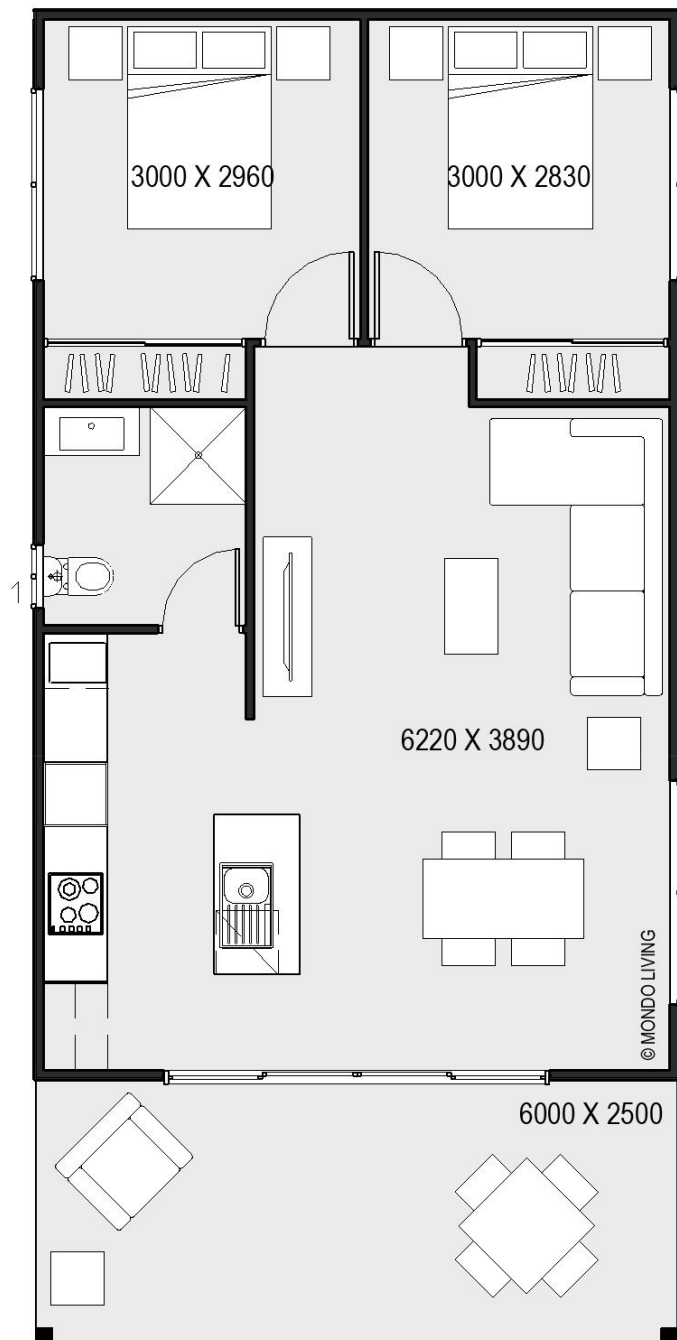
🛋️ 2 | 🛏️ 1 | 🚿 1

Total floor area 75m²

Exterior Width 6.00m

Exterior Length 12.50m

Patio 15 m²



© MONDO LIVING